



Guilden Sutton Parish Plan



Guilden Sutton Parish Plan

June 2012



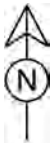
Guilden Sutton CP

Guilden Sutton Parish Area
Combined map and air photo

Date: 21-6-2012

Scale: 1:14449

Map Centre - easting / northing:
344615 / 368285



© Crown copyright and database right. All rights reserved (100052517) 2012 | Aerial Imagery - www.getmapping.com

0 440 m

LITTLETON CP

GUILDEN SUTTON CP

NOOLE VILLAGE CP

Hoole Village CP

Mickle Trafford CP

Barrow CP

Guilden Sutton CP

Guilden Sutton CP

Great Boughton CP

Chrstleton CP

ROMAN ROAD (route 21)

Guilden Sutton Parish Plan

Part 1 - Introduction

With the support of Guilden Sutton Parish Council a committee charged with producing a parish plan was formed in September 2006. A public meeting was held at which local residents were invited to raise issues that they felt should be included in the plan and to identify whether there was significant public support in order for the plan to be viable. A grant was awarded by Cheshire Community Council (now Cheshire Community Action) to fund aspects of the plan and £200 additional funding was received from Guilden Sutton Parish Council.

It was the view of the plan's steering committee that it should maintain independence from the Parish Council whilst maintaining a strong working relationship. As such the committee consisted of both councillors and non-councillors and regular updates were given to the council on the progress of the plan.



The steering committee used the views of electors at the public meeting to draw up an initial questionnaire that was delivered to each address in the parish. *A copy of the questionnaire is at Annex H.* The committee received 116 completed questionnaires from households, each comprising up to six individual responses. Guilden Sutton Post Office, Guilden Sutton village hall, the Bird in Hand public house and a local hairdressing business acted as 'drop-off' points

for completed surveys. Following the collation of the survey results, individual groups within the parish were contacted and given the opportunity to put forward their views on issues that affected them as a group. A follow-up questionnaire was conducted at the inaugural village fete in 2009 which was designed to seek additional information from local residents on issues raised in the first survey as well as covering more recent local issues such as changes to the local bus service.

The parish plan is designed to take account of the issues raised in both surveys and sets out actions and recommendations so that residents' concerns can be acted upon. An overall summary of the proposed actions is at Annex I. It is intended to give both short and long term recommendations to the Parish Council or to the most appropriate agency to take them forward and will give residents a say in the long term strategic management of the village.

Part 2 - Our Parish

Our parish has several local businesses. At the centre of the village, at Summerfield Road we have a post office and newsagent, a hair salon, a beautician, and a dentist and orthodontist. In the historic centre there is the local public house, the Bird in Hand. At the West of the village towards Piper's Ash there is a further hair salon, a children's day nursery and several other businesses situated in Wilding Business Estate. There are several farm businesses in the rural areas of the village as well as a guesthouse and two caravan sites. A council highways depot and industrial premises are just off the old Guilden Sutton Lane adjacent to the A55 bypass. A community run village hall is situated in the heart of the village just off Hill Top Road. Guilden Sutton CE Primary School, at the end of Arrowcroft Road, currently caters for over 200 children from both inside the village and from nearby areas. Most children from the village go on to attend Christleton, Upton, or Bishops' High Schools, while some go on to attend fee-paid schools such as the King's or Queen's School in Chester.



The Parish Council owns two pieces of land in the village, the playground at the rear of the village hall and the parish car park. The Council also rents an area of land off Guilden Sutton Lane which was the field for the old Guilden Sutton Primary School. This is currently used as a small football pitch and basketball court. The land may not be used for organised or competitive games. *A summary of respondents' opinions on the facilities for young people is at Annex A.*



There is regular bus transport towards the city centre during the working day. The 27 service is currently operated by Arrowbrook and runs through Hoole. The DB8 is a peak time service run by GHA Coaches and runs through Vicars Cross terminating at Chester Business Park in the Chester bound direction and at Elton in the outbound direction. At the time the parish plan survey was issued the village was served by different bus services.

The village has a Church of England church, St. John the Baptist, and was also previously served by a Methodist chapel which closed in 2010. Attempts are now being made to retain the building as a community facility. Family church services are held monthly at the village hall. The rector is the Revd Dr. Mark Hart who is also rector of the neighbouring Plemstall parish.



The village is served by Police Constable Rob Boulton, who returned to the parish in 2010 having previously been our local police officer until 2004. PC Boulton is based at the neighbouring Mickle Trafford police station.



Part 3 - Timeline

October 2006	Initial meeting of parish plan steering group.
May 2008	Funding application made.
July 2008	Questionnaire sent out.
August 2008	Questionnaire responses collected.
January 2009	Responses to Questionnaire collated.
March 2009	Questionnaire Results analysed.
April 2009	Presentation prepared for Parish council.
May 2009	Presentation to Parish Council on responses to the Questionnaire. (Several meetings held in the intervals and commentary written and edited).
July 2009	Follow-up questionnaire conducted at the village fete.
Feb-Jun 2012	Parish Council review draft.

Part 4 - Overarching Aims of the Parish Plan

The following aims have resulted from the initial survey that was sent out to residents of the parish in 2007. The aims are mentioned here and survey results and more detailed aims are mentioned in the specific section for each part of the survey.

The initial survey was to judge residents' opinions in the following areas:-

- Household Details (for statistical purposes only)
- Communications
- Parish Council
- Events
- Traffic and Transport
- Health and Safety
- Facilities
- Environment
- Planning

The responses were collated and a presentation was given to the Parish Council in 2009.

Part 5 - Household Analysis

Surveys Issued	581
Surveys Collected	116
Percentage Response	20%

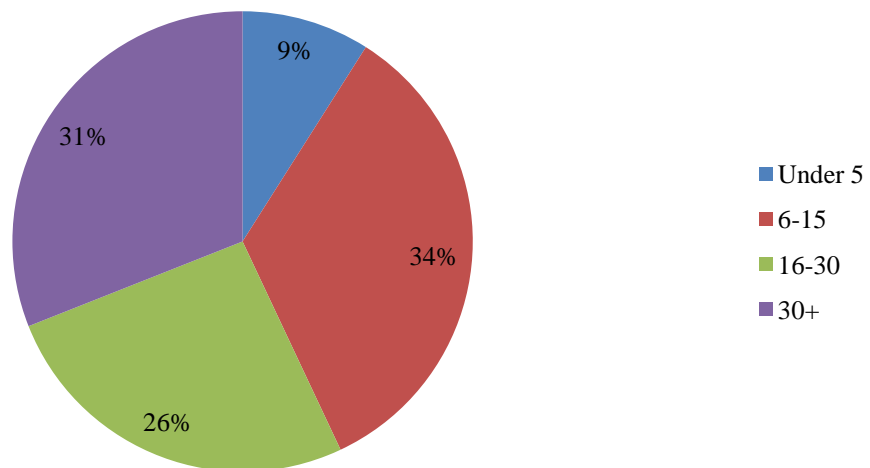
Age of Respondents

0-10	3%
11-17	7%
18-30	5%
31-64	62%
65+	23%

(There is a chart of respondents' ages at Annex B)

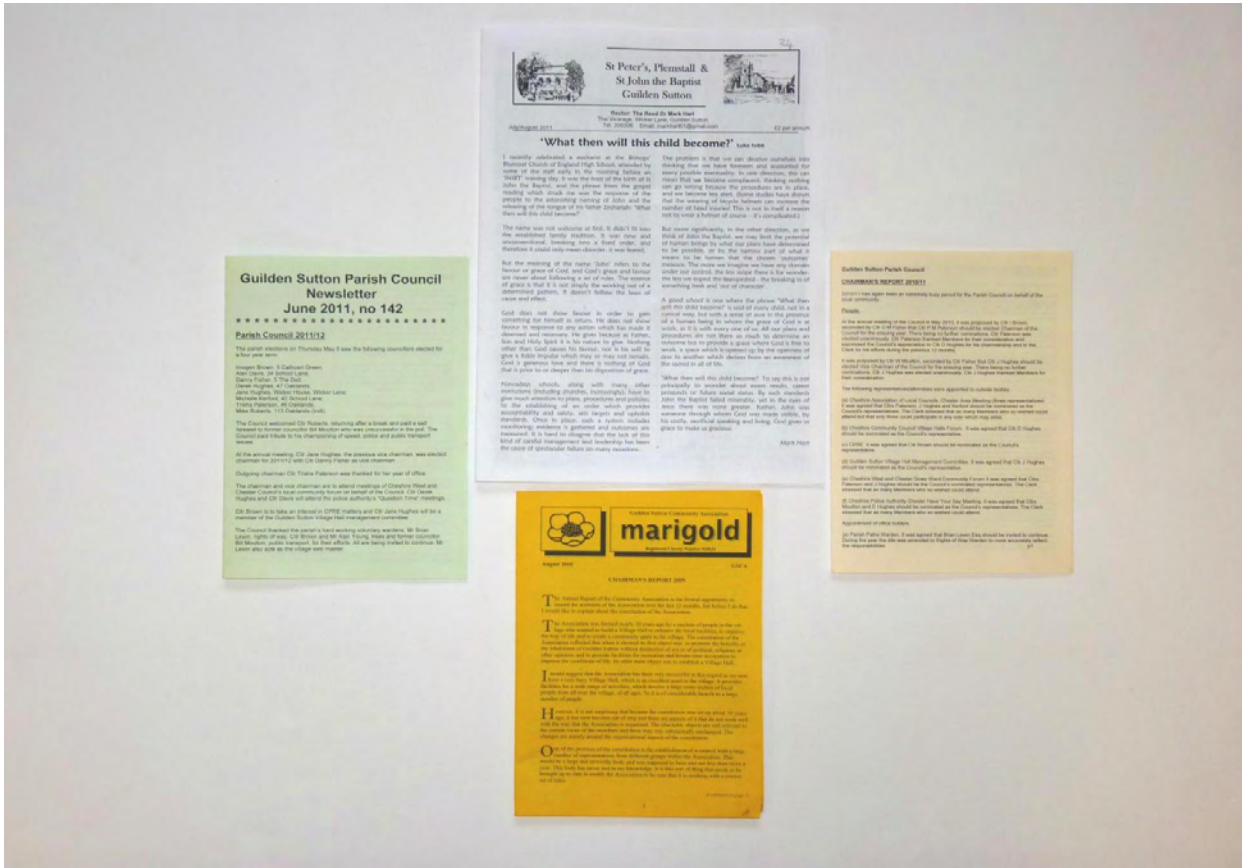
A majority of the respondents were adults of working age. A further majority had lived in the village for 16 years or more. Furthermore a majority believed that they would still be living in the village in 10 years time.

Number of Years in Village



Part 6 - Communications in the Parish

Communications from the Parish Council currently consist of the Parish Council Newsletter which is published bi-monthly, the independently controlled Parish Council website to be found at www.guildensutton.org.uk which includes an interactive blog and a Twitter feed. The Parish Council website is currently edited by Brian Lewin.



The Marigold newsletter is delivered termly. This is the official communication from the Community Association (which controls the village hall). The newsletter is edited by John Beavan. St. John's Church produces a monthly newsletter.

Exactly half of the respondents to the survey rated communications in the parish as good and a further 7% considered them excellent while 8% rated them as bad or terrible. Support for a combined newsletter for the parish was 82%, with some stating they would like to see the existing community newsletters combined and others stating they believe communication to be sufficient. *There is a chart at Annex C.*



In addition to printed media the local post office frequently donates space to the Parish Council to display notices. There are also three official boards used by the Parish Council which are situated at the village hall, Church Lane, and Guilden Sutton Lane. Half of respondents stated that they used the post office window as a means of communication and 33% stated that they checked the Council notice boards. The survey found that the website was not used by locals to find out what is going on. It is a pity, because this is an easy way to inform the whole village at the same time.



Actions (see also the list of actions at annex I)

Community Newspaper	Parish Council should form an exploratory committee to investigate the possibility of a combined parish newsletter in paper and digital form and ensure that it is delivered to every household.
Website Publicity	Parish Council should look into ways to ensure the parish website is used more efficiently and to increase public awareness.
Parish Council Newsletter	Parish Council should look into the possibility of improving the delivery of the Newsletter to ensure it reaches every home in the parish.

Part 7 - Guilden Sutton as a Community

Residents were asked whether they felt part of a community in Guilden Sutton and 79% said they did and there was a sense of community. It was established that most groups that exist within the parish were known about. A list of groups was included in the questionnaire.



Guilden Sutton Village Hall



A limiting factor for some is that many of the activities in the village centre on pre-school and school age children. Other reasons included work commitments, living in remote parts of the parish and mobility issues.



The Playing Field rented by the Parish Council

A minority were concerned that there was no real sense of community, and the parish plan group concluded that there would be more interest in community activities if they were better publicised.

Most respondents found out about events in the parish through non-Council means, such as the Marigold Newsletter and post office window.



Actions (see also the list of actions at annex I)

Promoting parish events	Community groups should be encouraged by Guilden Sutton Community Association and the Parish Council to ensure sufficient publicity is provided for each event that is held within the parish.
-------------------------	--

Part 8 - The Parish Council

Guilden Sutton has been a civil parish since the late 19th Century and a Parish Council has existed in the area since then. The Council meets every month with the exception of August to make decisions in the best interests of the parish.

A high proportion of respondents, 72% , believed that the Council published decisions well or



very well, with 14% suggesting that they were published badly. *There is a chart of respondents' views on the effectiveness of the Council's communication at Annex D.* Just over half of respondents stated that they knew when and where meetings were held and just under half stated that they would feel comfortable attending meetings of the Council. Three quarters said that they were aware that they could address the Parish Council during public speaking time.

Unfamiliarity and the fact that some residents do not know the councillors was listed as a key reason for not being willing to attend meetings of the Council. Others feel that their views would not be considered as important and some felt that the Council did not have sufficient power to influence decisions in the parish. Some of the younger respondents felt that they were not old enough to attend meetings, however there is no lower age limit for attendance.

The Council is elected every four years, although until 2011 an election had not been contested since the 1970s. Eight members are elected to the Council, and the next election will be held in 2015. In addition, Guilden Sutton forms part of the Chester Villages ward which elects two members to Cheshire West and Chester Council (CWaC). An MP is also elected to parliament from the City of Chester constituency.

The Council has re-established the surgeries near the shops on the first Saturday morning of the month to allow any resident to raise an issue face to face with a councillor. The Council also holds ad hoc meetings to discuss issues such as the proposal to change our parliamentary constituency from Chester to Winsford, super fast broadband and budgets. It is to the Council's credit that in the past year it has attained Quality Council Status.

Actions (*see also the list of actions at annex I*)

Promote activities of the Council	Parish Council to consider the possibility of additional publicity for Parish Council meetings.
Advise more readily on decisions	Parish Council to consider displaying minutes of decisions on the main council notice board.
Ensure electors understand what the councils can do.	Parish Council to consider producing a flyer and website information to illustrate what the Parish Council and CWaC are responsible for.

Part 9 - Parish Events

The initial parish plan survey was held prior to the reinstatement of the annual Guilden Sutton fete in 2009. At this time 86% of respondents stated that they would like to see more public events taking place within the village and 62% believed a fete would be a positive step. It is considered a key aim of development within this area that the fete should continue for the foreseeable future.

In addition to the fete, 59% stated that they would like to see a bonfire - which would need a site to be found - with 36%

suggesting an open garden event. Few respondents, however, indicated that they would be willing to organise or help with such events and therefore a drive for volunteers would need to take place in order for this kind of event to be considered. The parish held an open garden event in 2008 and 2009 and this type of event should be considered for future years, providing adequate support can be found. *There is a chart of respondents' wishes regarding future events at Annex E.*



Guilden Sutton Village Fete July 2011

A significant minority, 30% , indicated that they would be interested in a national fundraising event, which could also be considered, as many events currently support local charities.

Actions (*see also the list of actions at annex I*)

Ensure fete is sustainable for the foreseeable future	Parish Council to continue to liaise with the fete committee to provide support to the success of this important community event.
Recruit a pool of volunteers	The Community Association to be asked to seek volunteers who may be interested in becoming involved with planning and staffing local events.
Look into event possibilities	The Parish Council to facilitate a meeting in its community leadership role to enable village organisations/groups of enthusiasts and residents to consider the possibility of events being held within the parish with the following timescales in mind:- Bonfire (November 2014) Open Garden (resume Spring/Summer 2013) Rambling Society (Spring 2013) The feasibility of the events will be dependent on the number of volunteers found.

Part 10 - Transportation

In the questionnaire residents were asked to identify potential accident spots within the village, and 79% believed that there were some danger zones within the village. Many mentioned the Porters Hill area of School Lane as a potential area of hazard due to the narrow footpath, dim lighting and unsigned road chicane. Others pointed out the A41 junction at the edge of the parish as a serious concern. Since the questionnaire was published, Cheshire West and Cheshire Council (CWaC) rejected proposals for both a reduced speed limit and traffic lights at the junction.



Another area of concern was the speed of traffic on School Lane, particularly during rush hours. The Parish Council frequently leases a speed indicator device from CWaC in order to carry out a high visibility survey of speeds in the area. Others stated that the

parking during school drop-off and pick-up times posed a danger to both pedestrians and traffic. Speeding was seen as an issue by 60% of respondents and a variety of measures was suggested as a potential solution to the problem. Since the survey was conducted the Parish Council has supported the introduction of the 30mph limit on Station Lane, continues to press for a similar limit on Guilden Sutton Lane, originally recommended to the former Chester City Council, and is arguing for 30mph limits on the derestricted lengths of Wicker Lane and Hare Lane. More recently, Cheshire West and Cheshire Council has said it is willing to consider proposals for 20 mph zones where that is the wish of the community and the requirements are met. The Parish Council has recently formed a traffic group to deal with speed issues and general highways matters. *There is a chart of respondents' views on roads and traffic at Annex F.*

Highways were considered to be reasonable or better by 81% of respondents and the footways in the parish were considered to be reasonable or better by 79%. However the lack of a footway in some areas of Wicker Lane was a key area of concern.



Actions (*see also the list of actions at annex I*)

Speeding	Parish Council to continue to press for speed limits and conduct speed monitoring sessions.
----------	---

Public Transport

Guilden Sutton is currently served by two bus services. The 27 service runs during the day and runs through Oaklands to the City Centre via Hoole. The DB8 service runs twice daily at peak times from Ince to Chester Business Park via School Lane and Vicars Cross. The parish was previously served by the 84 bus on Sundays and Bank Holidays. This, however, was discontinued in 2003.

When the parish plan survey was conducted, the parish was served by the 35 service which ran every two hours via Vicars Cross. Only 5% of respondents stated that they used the bus daily, with 33% who never use the bus. When asked to state why they did not use the bus more often, responses included that the buses were not frequent enough (although frequency has now increased), that the buses do not run early or late enough, and that the stops in town were not



convenient (these have now changed, and buses once again stop at the Bus Exchange). *There is a chart on respondents' use of public transport at Annex G.*

If Mickle Trafford Railway station were to be reopened 48% stated that they would use it, while 79% stated that they would like to see the Chester Cycleway extended to Guilden Sutton, a project that was completed in 2009.

Actions (*see also the list of actions at annex I*)

Increase publicity for local bus services	Work with operators to encourage an advertising campaign within the parish to increase usage of public transport.
Lobby for later evening bus services	Look into the possibility that the DB6 service could be extended to Guilden Sutton and Mickle Trafford. This service runs hourly until 11pm.
Support the effort to reopen the railway station.	Support Mickle Trafford in their effort.
Organise a free bus day	In order to encourage public transport usage, the Parish Council should work with the operator to consider the possibility that there should be one day every year when the bus is free to use.

Part 11 - Policing

The parish is currently served by PC Rob Boulton, who is assisted by a PCSO, Lyam Beddows. At the time the survey was conducted, the parish was served by PC Mal Baker, who has since retired.

The emergency services had been used by 15% of the respondents during their time in the village, with 85% stating that their experience was reasonable or better. The majority of these said their experience was very good.

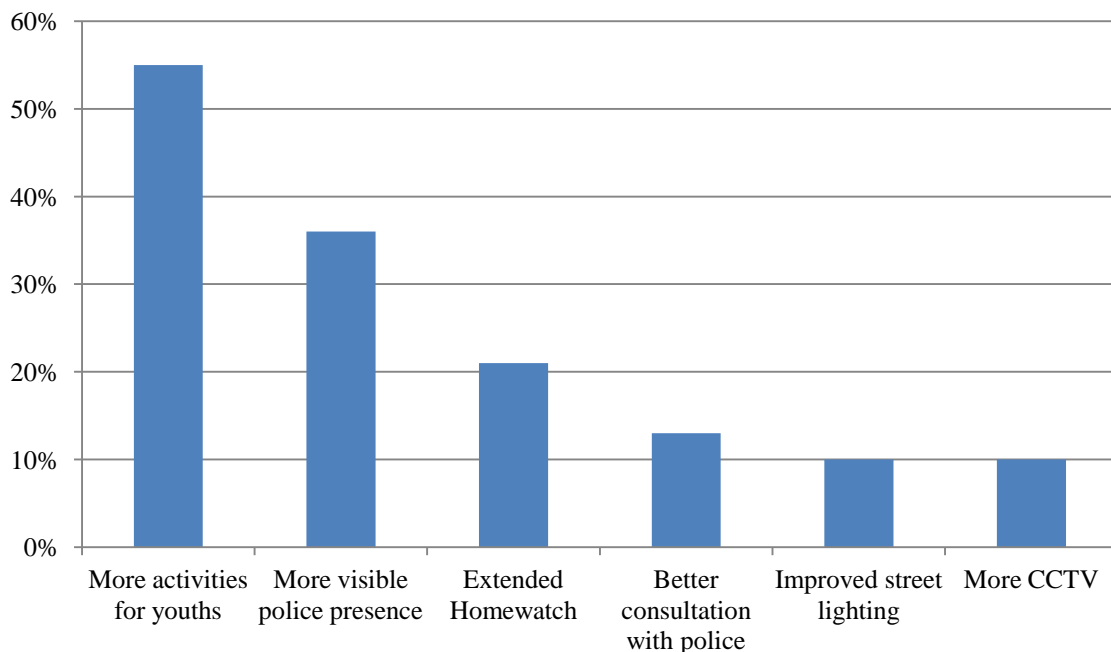
There was a degree of concern that the Police did not take concerns seriously or that there was a lack of interest in concerns, however since the survey patrols within the parish have been increased and the police are holding more regular surgeries in the village.

Crime was not widely thought to be a problem in Guilden Sutton, although 13% believed it was, with vandalism being a key area of concern. In this connection, roaming youths caused concern even when not seen to cause any crime. The village hall and post office car parks were the most mentioned areas of concern. Other crimes that residents had suffered included burglary and identity theft however 90% had no concerns about their personal safety in Guilden Sutton.

When asked to give suggestions for improving the situation in the village, 55% suggested more activities for youths, although statistics suggest that much of the trouble in the parish is caused by youths from other areas. The second most popular measure, a more visible police presence, was favoured by 36%.

While only a minority thought crime was a problem, this chart shows the relative popularity of various measures:

Crime - what measures could be taken?



Actions (see also the list of actions at annex I)

Encourage evening police patrols	The police should be encouraged to run more late evening police patrols around the parish.
Continue police surgeries	Police surgeries should continue and be advertised in order for the public to have the chance to express their views on policing in the parish.
Provide more facilities for youth.	The Parish Council and Community Association to continue to search for ways to improve facilities for youth

Part 12 - Local Businesses

Local businesses are used regularly (monthly or more) by 92% of respondents, with the vast majority using businesses at least weekly. Nobody stated that they never took advantage of local businesses. Several respondents suggested that they would like to see longer opening hours for businesses in the village, some suggesting that opening until 6pm would be an advantage for those who work. Others stated that the shops were too far away for those living in some parts of the parish.



The post office and newsagents was voted the most important business in the parish, with 98 respondents putting it as their first choice. Residents rated the two hairdressers as the second most important businesses with the dentist third. Inspire, the beauty salon, is a more recent addition.





There are also many business owners living in the parish who either operate businesses outside the area or run home-based business.

Actions (see also the list of actions at annex I)

Ensure the post office remains in operation	Whilst there is no current threat to the post office, the Parish Council should be prepared to support the local community in taking action to oppose closure if and when the post office network announces that further closures could take place.
To support essential local businesses.	To consider ways and means, including Government initiatives, to keep local businesses alive.

Part 13 - Environment

Cheshire West and Chester Council's Streetscene service is responsible for litter picking, sweeping footways and tidying its own amenity areas and the high footfall areas around the



Summerfield Road shops, the village hall car park and the children's play area. The Parish Council employs a lengthsman for two hours a week who deals with the parish playing field, the parish car park on Church Lane and the grassed areas around the village hall. If time permits additional attention is paid to the village hall car park and the play area. Many of the public footpaths in the parish border private farmland and it is the responsibility of the farmers to ensure that footpaths in such areas are not obstructed by protruding trees and hedges. In addition, it is the responsibility of residents to ensure their own hedges do not obstruct the pavements.

There were not enough litter bins or benches in the parish, whilst 17% stated that they would like to see more bulbs planted. The Parish Council currently plants bulbs in various areas annually, and it is recommended that this project be continued. Some suggested that the mowing of grass verges in the spring can cut the lives of daffodils short and that more care should be taken over this.

Keeping hedges and trees trimmed was the most frequently suggested option for improving the local environment. It was also a concern of many residents that there

One in five respondents indicated that they would be willing to help with action points on the environment and volunteers in this area would be important if progress was to be made. Some suggested that a duck pond would make a valuable addition to the parish and there were some suggestions that the area around the village hall could be improved. Six respondents stated that they appreciated the work done by the Rainbows in the area outside the new dentist's



premises.

Exactly half of respondents believed that there was a problem with litter in the parish; the most frequently mentioned solution to this was that there should be more litter bins. Many residents believed that the area around the village hall was the worst area, particularly towards the end of the week. Others thought that there should be community cleaning days, more dog fouling bins and 15% thought that lengthsman services should be increased, particularly at peak times.

Members of the Parish Council gardening and tidying up round the War Memorial

A very high proportion, 88%, of respondents stated that they used the public footpaths on a regular basis and 55 people said that they used them weekly.



Footpath by Cinder Lane in the frost



The vast majority know where the footpaths are and believe that they are well signposted. Since the survey, the Chester Cycleway has been opened, providing an additional footpath just outside the parish.

Footpath sign by Church Lane

Dog fouling was thought to be an issue by 46%, with 48% stating that there should be more action taken by wardens. Many also believe that there should be more bins for this purpose (two additional bins have been installed since the survey was conducted), and that some notices are not effective. Only 1% believes no action should be taken. Cheshire West and Cheshire Council now allows litter bins to be used for poop scooping





Each autumn, for a number of years, parish councillors have planted bulbs in many areas around the village

It was suggested by 21 respondents that public areas could make use of renewable energy resources, particularly the village hall. Recycling was supported by 96% with many advocating a local recycling bank. The school has a paper bank and has recently installed solar panels.

Actions (see also the list of actions at annex I)

Monitor the effectiveness of the service supplied by Streetscene	Parish Council to consider whether they need to pay for additional work.
Litter	The Parish Council should identify problem areas for litter and look into the possibility of installing bins in the areas most affected, possibly accompanied by an education programme.
Dog fouling	Dog owners should be actively encouraged by the Parish Council to take additional care. An action group should be set up to recommend solutions to the problem, possibly including an education programme.
Renewable energy	Working with appropriate energy bodies, the Parish Council should facilitate the promotion of the long-term benefits of renewable energy sources being applied to public and private properties in the parish.

Part 13 - Planning

The parish and surrounding areas are Green Belt meaning there is a presumption against inappropriate development including additional open market housing. The local green belt policy was supported by 94% whilst 8% believed that there was a need for additional housing in the area. Starter homes and retirement homes were the most popular suggestions for future accommodation in the village. There was also considerable support for converting existing properties. Cheshire West and Cheshire Council is reviewing the green belt around Chester to assess the extent to which it meets the criteria for green belt designation; in Guilden Sutton this includes the land between the A41 and the A55. Four parishes in Chester villages ward have been considering affordable housing issues simply to avoid such development being imposed on them. The Parish Council, along with Mickle Trafford and District Parish Council, have joined the group.

Residents were strongly opposed to additional tourist accommodation; the parish is currently served by two caravan sites as well as a Bed and Breakfast which is situated in Belle Vue Lane.



Winter scene from Guilden Sutton

Actions (see also the list of actions at annex I)

Green Belt	The Parish Council should work to support the protection of the Green Belt in the parish and surrounding areas by helping to ensure that any development that takes place is appropriate.
------------	---

Part 14 - The Way Forward

Implementation, monitoring and review of the Parish Plan.

This publication is not the end of the parish plan process but the beginning. A great deal of work has gone into its preparation and the challenge now is to implement it. The issues and priorities raised will reinforce the Parish Council in its efforts to influence other local authorities and decision makers whose actions have an effect on Guilden Sutton residents. If the plan is to achieve its targets it will require continuing commitment by Guilden Sutton Parish Council which will also need to monitor its progress and ensure that it is reviewed and updated periodically. The Localism Act, which received Royal Assent on November 15 2011, introduced rights and powers to allow local communities to shape new development by coming together to prepare neighbourhood plans. We will need to familiarise ourselves with this to protect our village and influence decisions. In addition to the Localism Act, Cheshire West and Chester Council is also involved in three significant issues which could have major implications for the parish.

These are:

- A review of local government across the borough to ensure that it continues to be effective and convenient and reflects the identities and interests of local communities.
- A national pilot in transforming the way in which public services are delivered.
- Housing reform involving new house building with the potential to unlock funds for community and infrastructure improvements in parishes commensurate with the amount of new housing which may be built.

The Parish Council will engage with Cheshire West and Chester Council to fully understand these issues and identify potential benefits to the parish including affordable housing.

Actions proposed in the parish plan will not happen overnight, some may never happen, and some may be changed as circumstances alter. Some concerns have already been addressed, such as the resurfacing of Station Lane and the introduction of the 30mph speed limit between ourselves and Mickle Trafford. The plan will be distributed to every household - if you want to get involved in any of the proposed action groups please contact the parish clerk or any member of the Parish Council.

THANKS

Guilden Sutton Parish Plan Steering Group would like to record its grateful thanks to

- Bron Kerrigan, Claire Jones and Sarah Baron at Cheshire Community Action for their help in getting started, arranging funding and help and guidance.
- Angela Loftus of the former Chester City Council for her guidance
- The people of Guilden Sutton who took the time and careful consideration to complete the questionnaire

And the team:

*Ronald Bayton
Mark Hart
Mark Paterson
Trisha Paterson
Mike Roberts
Gail Young*

With contributions from:

*Richard Batterham
Sheena Bayton
Cathy Carter
Peter Hawkins
Glyn Jones
David Norbury*

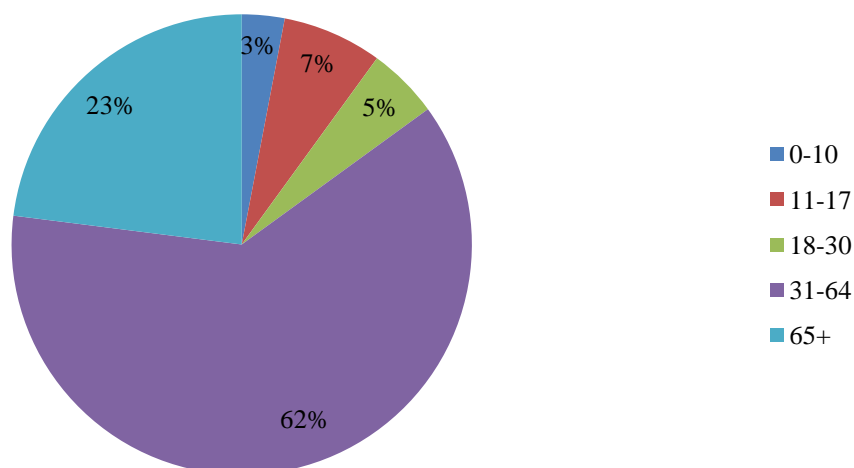
FACILITIES – YOUNG PEOPLE

	Ages 11 – 18	Under 11
Very Good	3%	10%
Good	5%	30%
Reasonable	35%	40%
Poor	35%	8%
Very Poor	12%	3%
Not known	10%	9%

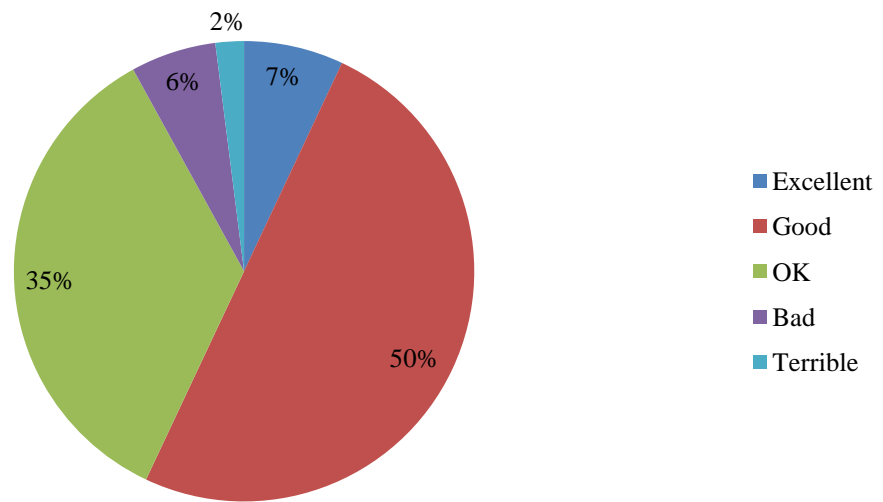
Village Play Area:

- 39 % had family that used the children’s play area
- 54% rated it good or very good
- 95% thought it was reasonable or better

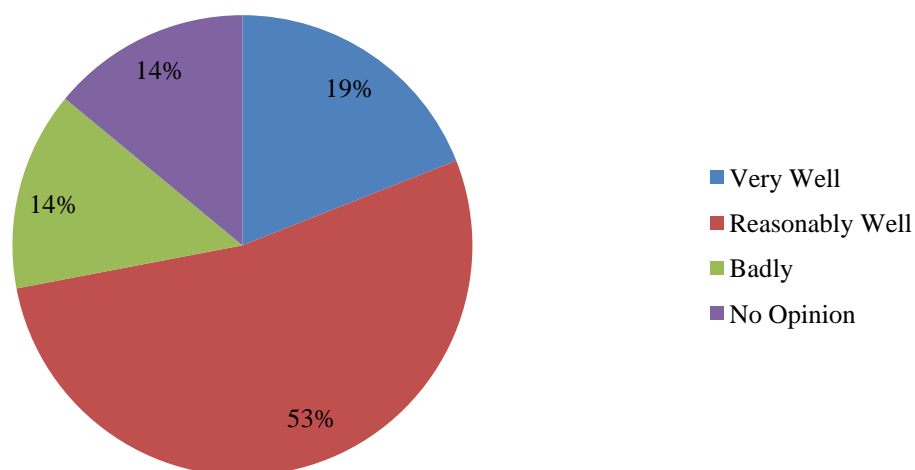
Ages of Respondents



Communications in the Parish



Parish Council Communication



Events – Would you like to see more?

- Fete – 62%
- Bonfire – 59%
- Open Garden – 36%
- National Fund Raising – 30%
- Rambling – 29%
- Quiz – 26%
- Music/Singing-25%
- Dance -24%
- Themed – 19%
- Sport – 19%
- Cards – 10%
- Bingo – 5%

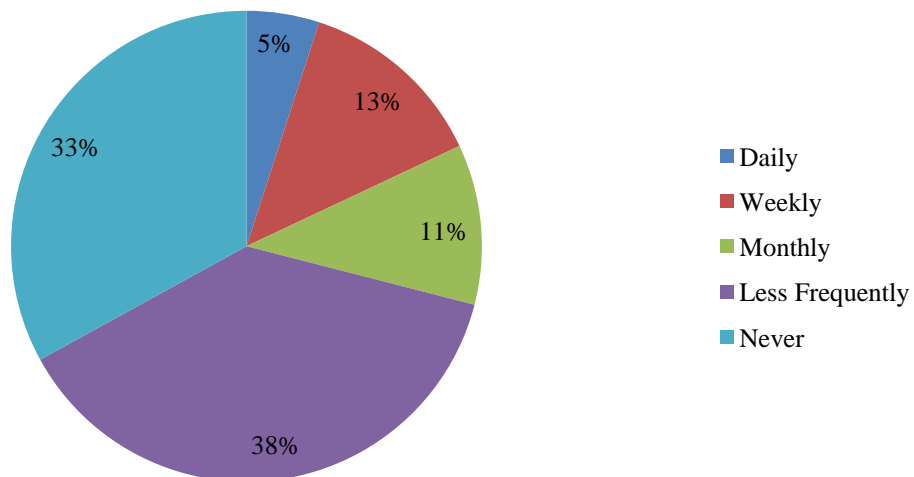
Traffic & Transport - Roads

- Standard of Roads?
 - 27% considered them to be good or very good
 - 81% rated them as reasonable
 - Main area of concern was towards Mickle Trafford

- A41 Junction – Traffic lights & Speed reduction?
 - Yes – 53%
 - No - 33%
 - Maybe - 14%

- Pedestrian crossing at rugby club?
 - Yes – 56%
 - No - 26%
 - Maybe – 18%

How Often do you use Public Transport?



Annex H to Guilden Sutton Parish Plan

GUILDEN SUTTON PARISH PLAN QUESTIONNAIRE

The purpose of this questionnaire is to help form a parish plan that reflects the views of the residents of the parish of Guilden Sutton. We apologise for the length, but we consider it to be important to get as many views as possible.

What is a Parish Plan?

A critical but constructive survey of a community by the people who live and work in that community, that results in the development of a community voice, which is then used to create a shared vision for the future, and an action plan for turning that vision into reality.

This parish Plan will help influence the future structure of the parish, and by completing the questionnaire, you will be able to have your say on this and if it is returned by the deadline of 30 July 2008 your name will be entered into a free prize draw giving you the chance to win a family ticket to Cheshire Jets. If you wish to be entered into the free prize draw, please enter your details on the personal detail sheet. This sheet will be detached from the main body of the questionnaire, so as to ensure that answers cannot be identified with particular households or people.

Your completed questionnaire can be returned by dropping into one of the collection boxes which can be found at the following locations:

Summerfield House	Post Office	Guilden Sutton Primary School
St John's Church or Vicarage	Village Hall	Hairdressers on Guilden Sutton Lane

If you have any queries regarding the questionnaire or the parish plan or wish to help with parish plan activities, please feel free to contact any member of the Parish Plan Steering Group, whose details can be found at the end of the questionnaire.

PERSONAL DETAILS

Please complete this page if you wish to be entered for the free prize draw. Winners of the prize draw will be notified by telephone.

Contact name.....
 Address.....
 Telephone number.....
 Email.....

HOUSEHOLD DETAILS

1. The questionnaire has space for up to 6 people in the household to record their individual views. For each respondent, please indicate their age group and gender.

Respondent	1	2	3	4	5	6
Age Group (tick box)	0 - 4					
	5- 10					
	11- 17					
	18 - 30					
	31 - 64					
	65 +					
Gender (tick box)	Male					
	Female					

2. Please indicate how long you have lived in Guilden Sutton

Respondent	1	2	3	4	5	6
Less than 1 year						
Between 1 – 5 years						
Between 5 – 15 years						
Between 15 – 30 years						
More than 30 years						

3. Do you see yourself still here in 10 years time?

Respondent	1	2	3	4	5	6
Yes						
No						
Maybe						

If you have answered no, please indicate potential reason for leaving the parish:

Respondent	1	2	3	4	5	6
Job / career						
Education						
No appropriate / affordable housing in parish						

Other (please specify).....

11. Do you know when and where the Parish Council meetings are held?

Respondent	1	2	3	4	5	6
Yes						
No						
Maybe						

12. Do you feel comfortable to attend the Parish Council meetings?

Respondent	1	2	3	4	5	6
Yes						
No						
Maybe						

If not, why?.....

13. Do you know you can raise any issue of concern at public speaking time at the beginning of these meetings?

Respondent	1	2	3	4	5	6
Yes						
No						
Maybe						

EVENTS

14. In the past Guilden Sutton was active in organising annual community events. Would you like to see an increase in such events in the parish?

Respondent	1	2	3	4	5	6
Yes						
No						

15. What sort of social events would you be interested in?

Respondent	1	2	3	4	5	6
Quiz night						
Bingo						
Bonfire night						
Whist drive, Bridge etc						
Fete						
Sporting activity						
Dance						
Singing/ Music						
Themed evening						
Open garden						
Rambling						
National fund raising events, eg Children in Need						

Other (please specify).....

16. Would you be prepared to organise or run any of the above events?

Respondent	1	2	3	4	5	6
Yes						
No						

If so, please state which.....

17. Are you involved in an organisation that would like to get involved and benefit?

Respondent	1	2	3	4	5	6
Yes						
No						

If so, please state which organisation and which event

.....

TRAFFIC AND TRANSPORT

18. Do you think there are any current danger spots on the roads or paths in the parish?

Respondent	1	2	3	4	5	6
Yes						
No						

If so, please state the location of the danger spot(s) below:

.....

19. Do you think speeding is an issue in the parish?

Respondent	1	2	3	4	5	6
Yes						
No						

20. If you think speeding is an issue, please indicate which of the following speed control measures you would support.

Respondent	1	2	3	4	5	6
Extension of speed limit						
Illuminated speed signs						
Speed bumps						
Rumble strips						
Traffic chicanes						
Parking restrictions						
Weight restrictions						
Speed indicator device						
Regular use of radar equipment						

21. There is an initiative in Cheshire to sign a pledge called “Set the Pace”, that you will observe the speed limits in Cheshire villages. Would you be willing to sign? (See www.cheshire.gov.uk/roadsafety/SetThePace.htm)

Respondent	1	2	3	4	5	6
Yes						
No						
Maybe						

22. What is your opinion of street lighting in the parish?

Respondent	1	2	3	4	5	6
Very good						
Good						
Reasonable						
Poor						
Very Poor						

If you have answered poor or very poor, please state where and the potential problem or hazard

.....

23. What do you think of the standard of the roads?

Respondent	1	2	3	4	5	6
Very good						
Good						
Reasonable						
Poor						
Very poor						

If you have answered poor or very poor, please state where it is poor

.....

24. What do you think of the standard of the grass verges?

Respondent	1	2	3	4	5	6
Very good						
Good						
Reasonable						
Poor						
Very poor						

If you have answered Poor, please state where it is poor

.....

25. How user-friendly are the pavements in Guilden Sutton for people with disabilities, pushchairs or wheelchairs?

Respondent	1	2	3	4	5	6
Very good						
Good						
Reasonable						
Poor						
Very poor						

If you have answered Poor, please state where it is poor

.....

26. Do you think traffic lights are required at the junction of Guilden Sutton Lane and A41 and a reduction in the speed limit on this section of A41?

Respondent	1	2	3	4	5	6
Yes						
No						
Maybe						

27. Do you think a pedestrian crossing is required at the junction of Hare Lane and A51 near the rugby club?

Respondent	1	2	3	4	5	6
Yes						
No						
Maybe						

28. How often do you use the public transport?

Respondent	1	2	3	4	5	6
Daily						
Weekly						
Monthly						
Less frequently						
Never						

If you have answered "Less frequently" or "Never", please state what would encourage you to use public transport more often

.....

29. Do you think the cycleway should be extended from Chester to the village?

Respondent	1	2	3	4	5	6
Yes						
No						
Maybe						

30. Would you use the Mickle Trafford station if it was re-opened? (It lies on both the Warrington and Manchester lines)

Respondent	1	2	3	4	5	6
Yes						
No						
Maybe						

If it was re-opened, how often would you use it?

Respondent	1	2	3	4	5	6
Most days						
Once a week						
Once a month						
Occasionally						
Never						

31. If you attend secondary school, how do you normally get to school?

Respondent	1	2	3	4	5	6
Car						
Bus						
Bike						
Walk						
Not applicable						

Please indicate which secondary school you attend.....

HEALTH & SAFETY

32. Have you had occasion to use the emergency services (Fire, Ambulance Police) in the last 2 years?

Respondent	1	2	3	4	5	6
Yes						
No						

33. If so, what are your views on the standard of service provided by the emergency services?

Respondent	1	2	3	4	5	6
Very good						
Good						
Reasonable						
Poor						
Very poor						

If you have answered poor or very poor, please give further details

.....

34. Do you think crime is a problem in Guilden Sutton?

Respondent	1	2	3	4	5	6
Yes						
No						

35. If yes, which crimes are of particular concern

Respondent	1	2	3	4	5	6
Theft						
Mugging						
Vandalism						
Youths						

Other (please specify).....

36. Have you been a victim of crime in the last 5 years?

Respondent	1	2	3	4	5	6
Yes						
No						

37. What type of crime have you experienced?

38. Do you think that personal safety is an issue in the parish?

Respondent	1	2	3	4	5	6
Yes						
No						

If so, please state where below:

39. Through fear of crime, please indicate what you are most likely to do:

Respondent	1	2	3	4	5	6
Stay away from certain areas						
Only go out accompanied						
Avoid going out after dark						
Carry a personal alarm						
one of these						

Other (please specify).....

40. Please indicate whether you think any of the following measures are required.

Respondent	1	2	3	4	5	6
More visible police presence						
Better consultation between police and community						
Improved street lighting						
More activities for youths						
More CCTVs						
Extended homewatch scheme						

Other (please specify).....

FACILITIES

41. How would you rate the facilities for young people (ie 11 – 18) in the village?

Respondent	1	2	3	4	5	6
Very good						
Good						
Reasonable						
Poor						
Very poor						

What other facilities would you like to see?.....

42. How would you rate the facilities for children (ie under 11) in the village?

Respondent	1	2	3	4	5	6
Very good						
Good						
Reasonable						
Poor						

What other facilities would you like to see?.....

43. Do you or a member of your household use the village playground?

Respondent	1	2	3	4	5	6
Yes						
No						

44. If so, what do you think of the facilities in the playground?

Respondent	1	2	3	4	5	6
Very good						
Good						
Reasonable						
Poor						
Very poor						

What other facilities would you like to see?.....

45. How often do you use the local businesses?

Respondent	1	2	3	4	5	6
Daily						
Weekly						
Monthly						
Less frequently						
Never						

If you have answered "Less frequently" or "Never", please state what would encourage you to use local shops more often

.....
 What additional facilities would you like to see in the village?

46. Which 3 businesses do you rate as most important?

- 1).....
- 2).....
- 3).....

ENVIRONMENT

47. Please indicate whether you think any of the following would help to improve and maintain the environment within the parish

Respondent	1	2	3	4	5	6
Plant more trees / hedges						
Plant more bulbs						
Cut down some trees						
Keep hedges trimmed						
Benches						
More litter bins						

Other (please specify).....

48. Would you be prepared to help with any of the above?

Respondent	1	2	3	4	5	6
Yes						
No						
Maybe						

If so, please state which

49. Do you think litter is a problem in the parish?

Respondent	1	2	3	4	5	6
Yes						
No						

If so, where are the areas of concern.....

50. The Parish Council already pays for a Lengthsman to collect litter on Guilden Sutton Lane and around the play area. What other steps do you think should be taken to deal with the litter?

Respondent	1	2	3	4	5	6
Pay for more litter picking						
Putting up notices						
Entering a community pride competition						
Have monthly spring clean days						
More dog litter bins						
More litter bins						

Other (please specify).....

51. Do you use the local footpaths in the parish?

Respondent	1	2	3	4	5	6
Yes						
No						

If so, how frequently?.....

52. Do you know where they are?

Respondent	1	2	3	4	5	6
Yes						
No						

53. Are the local footpaths well signposted?

Respondent	1	2	3	4	5	6
Yes						
No						

54. Do you consider dog fouling to be a big issue in the parish?

Respondent	1	2	3	4	5	6
A big problem						
A problem						
Neither an issue or not						
A small problem						
Not a problem						

If a problem, which areas.....

55. If yes, please indicate which measures you feel would improve the situation.

Respondent	1	2	3	4	5	6
More dog litter bins						
More signage						
Patrols by dog wardens						
Fines by community wardens						

56. Do you actively support local recycling initiatives?

Respondent	1	2	3	4	5	6
Yes						
No						

57. What more do you think could be done to encourage more recycling in the village?
.....

58. Would you support energy saving initiatives?

Respondent	1	2	3	4	5	6
Yes						
No						

59. What energy saving initiatives would you like to see in the village?
.....

PLANNING

A Green Belt is an area within and around a village where development is not allowed, in order to maintain the rural nature of the village.

60. Guilden Sutton Parish Council has actively defended the green belt in and around Guilden Sutton. Is this a policy you support?

Respondent	1	2	3	4	5	6
Yes						
No						
Maybe						

61. Do you think there is a need for additional housing in the parish?

Respondent	1	2	3	4	5	6
Yes						
No						
Maybe						

62. What type of housing do you consider there is a need for?

Respondent	1	2	3	4	5	6
Starter homes for young families						
Family homes						
Retirement homes						

63. Affordable housing are smaller starter/retirement homes that have restrictions, tying the occupiers to people with local connections and property values in the future. In your opinion, what type of housing development would be acceptable in Guilden Sutton?

Respondent	1	2	3	4	5	6
Single dwelling						
Groups of less than 10 dwellings						
Affordable housing						
Conversion of any redundant property						
Large scale extensions to existing						
Small scale extensions to existing						

64. If housing had to be built in the parish, where do you think this should be?

Respondent	1	2	3	4	5	6
Guilden Sutton Lane						
Wicker Lane						
Belle Vue Lane						

Other (please specify).....

65. Would you like to see more tourist activity in the parish, such as campsites, B & B trade?

Respondent	1	2	3	4	5	6
Yes						
No						
Maybe						

Thank you for taking the time to complete the questionnaire, your comments are important to us.

CONCLUSION

Please give details of up to 3 of your top priorities, in order, which you feel would improve the quality of life for your household, and the community. Include something you feel strongly about even if not covered in the questionnaire.

- 1.....
- 2.....
- 3.....

Please indicate below whether you would be interested in contributing to any of the working groups that may be formed to tackle issues arising out of this parish plan questionnaire:

I would / would not be interested in contributing to one of the parish plan questionnaires follow on groups.

Topic of interest.....
 Name.....
 Telephone.....
 E-mail.....

ADDITIONAL COMMENTS

Please use the space below for any additional comments you may wish to make, not addressed by this questionnaire.

.....

THANK YOU FOR TAKING THE TIME TO COMPLETE THIS QUESTIONNAIRE

Contact details for the Parish Plan Steering Group:
 Mr Ron Bayton, 24 Cinder Lane, 301286
 Rev Mark Hart, The Vicarage, 300306
 Cllr Trisha Paterson, 46 Oaklands, 300307
 Cllr Michael Roberts, 113 Oaklands, 300684
 Mrs Gail Young, 6 Middlecroft, 301558

List of Actions

Action	What	Who	Timescale Short 6 months: Medium 1 year: Long over 1 year.
Community Newspaper	Parish Council should form an exploratory committee to investigate the possibility of a combined parish newsletter in paper and digital form and ensure that it is delivered to every household.	Parish Council, Community Association, St John's Church, Webmaster	Medium
Website Publicity	Parish Council should look into ways to ensure the parish website is used more efficiently and to increase public awareness.	Parish Council, Webmaster, Community Assoc.	Short
Parish Council Newsletter	Parish Council should look into the possibility of improving the delivery of the Newsletter to ensure it reaches every home in the parish.	Parish Council, Distributors	Medium
Promoting Parish Events	Community groups should be encouraged by Guilden Sutton Community Association and the Parish Council to ensure sufficient publicity is provided for each event that is held within the parish.	Community Association, Parish Council, Webmaster	Medium
Promote Activities of the Council	Parish Council to consider the possibility of additional publicity for Parish Council meetings.	Parish Council, Webmaster	Medium
Advise more readily on decisions	Parish Council to consider displaying minutes of decisions on the main council notice board.	Parish Council	Short
Ensure electors understand what the councils can do.	Parish Council to consider producing a flyer and website information to illustrate what the Parish Council and CWaC are responsible for.	Parish Council, Cheshire West & Chester Council (CWAC)	Medium
Ensure fete is sustainable for the foreseeable future	Parish Council to continue to liaise with the fete committee to provide support to the success of this important community event.	Parish Council, Fete Committee	Medium to Long
Recruit a pool of volunteers	The Community Association to be asked to seek volunteers who may be interested in becoming involved with planning and staffing local events.	Community Association	Medium
Look into event possibilities	The Parish Council to facilitate a meeting in its community leadership role to enable village organisations/groups of enthusiasts and residents to consider the possibility of events being held within the parish with the following timescales in mind:- Bonfire (November 2014) Open Garden (resume Spring/Summer 2013) Rambling Society (Spring 2013) The feasibility of the events will be dependent on the number of volunteers found.	Parish Council, Community Association	Medium

Speeding	Parish Council to continue to press for speed limits and conduct speed monitoring sessions.	Parish Council, Police, Highway Authority	Short
Increase publicity for local bus services	Work with operators to encourage an advertising campaign within the parish to increase usage of public transport.	Parish Council, Bus Operators, CWaC integrated transport	Medium
Lobby for later evening bus services	Look into the possibility that the DB6 service could be extended to Guilden Sutton and Mickle Trafford. This service runs hourly until 11pm.	Parish Council, Operator, CWaC integrated transport	Medium
Support the effort to reopen the railway station	Support Mickle Trafford in their effort.	Parish Council	Long
Organise a free bus day	To encourage use of public transport the Parish Council should work with the operator to consider making the bus free to use one day every year.	Parish Council, Operator, CWaC integrated transport	Medium
Encourage evening police patrols	The police should be encouraged to run more late evening police patrols around the parish.	Parish Council, Cheshire Police	Medium
Continue police surgeries	Police surgeries should continue and be advertised in order for the public to have the chance to express their views on policing in the parish.	Cheshire Police	Medium
Provide more facilities for youth.	The Parish Council and Community Association to continue to search for ways to improve facilities for youth.	Parish Council, Community Association	Long
Ensure the post office remains in operation	Whilst there is no current threat to the post office, the Parish Council should be prepared to support the local community in taking action to oppose closure if and when the post office network announces that further closures could take place.	Parish Council, CWaC, MP	Long
To support essential local businesses.	To consider ways and means, including Government initiatives, to keep local businesses alive.	Parish Council, CWaC, MP	Medium
Monitor the effectiveness of the service supplied by Streetscene.	Parish Council to consider whether they need to pay for additional work.	Parish Council, Streetscene	Medium
Litter	The Parish Council should identify problem areas for litter and look into the possibility of installing bins in the areas most affected, possibly accompanied by an education programme.	Parish Council Streetscene/CWaC	Medium
Dog fouling	Dog owners should be actively encouraged by the Parish Council to take additional care. An action group should be set up to recommend solutions to the problem, possibly including an education programme.	Parish Council, Dog Owners, CWaC Dog Warden Service	Medium

Renewable energy	Working with appropriate energy bodies, the Parish Council should facilitate the promotion of the long-term benefits of renewable energy sources being applied to public and private properties in the parish.	Parish Council, Community Association, CWaC, Suppliers	Medium
Green Belt	The Parish Council should work to support the protection of the Green Belt in the parish and surrounding areas by helping to ensure that any development that takes place is appropriate.	Parish Council CWaC	Short